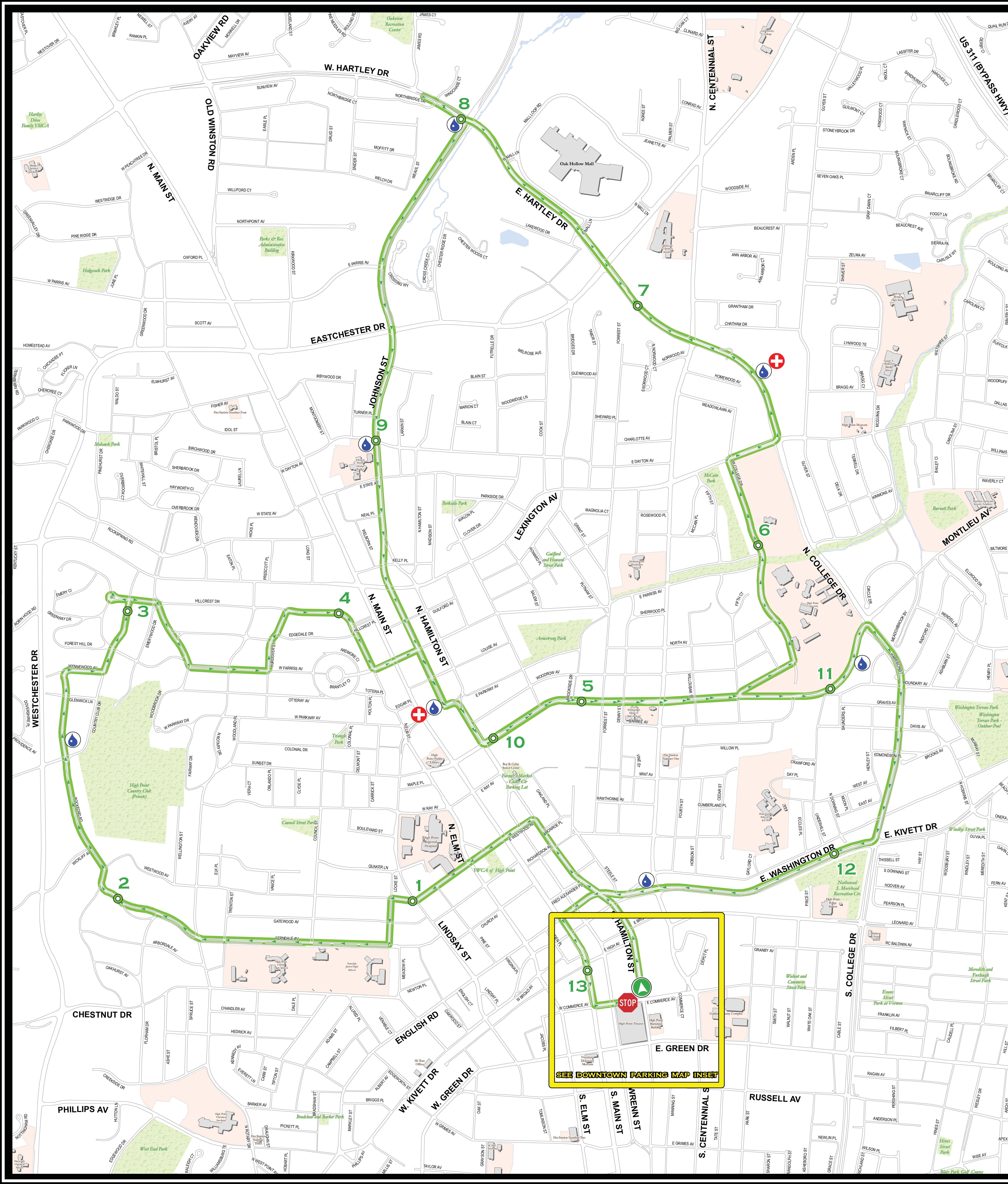




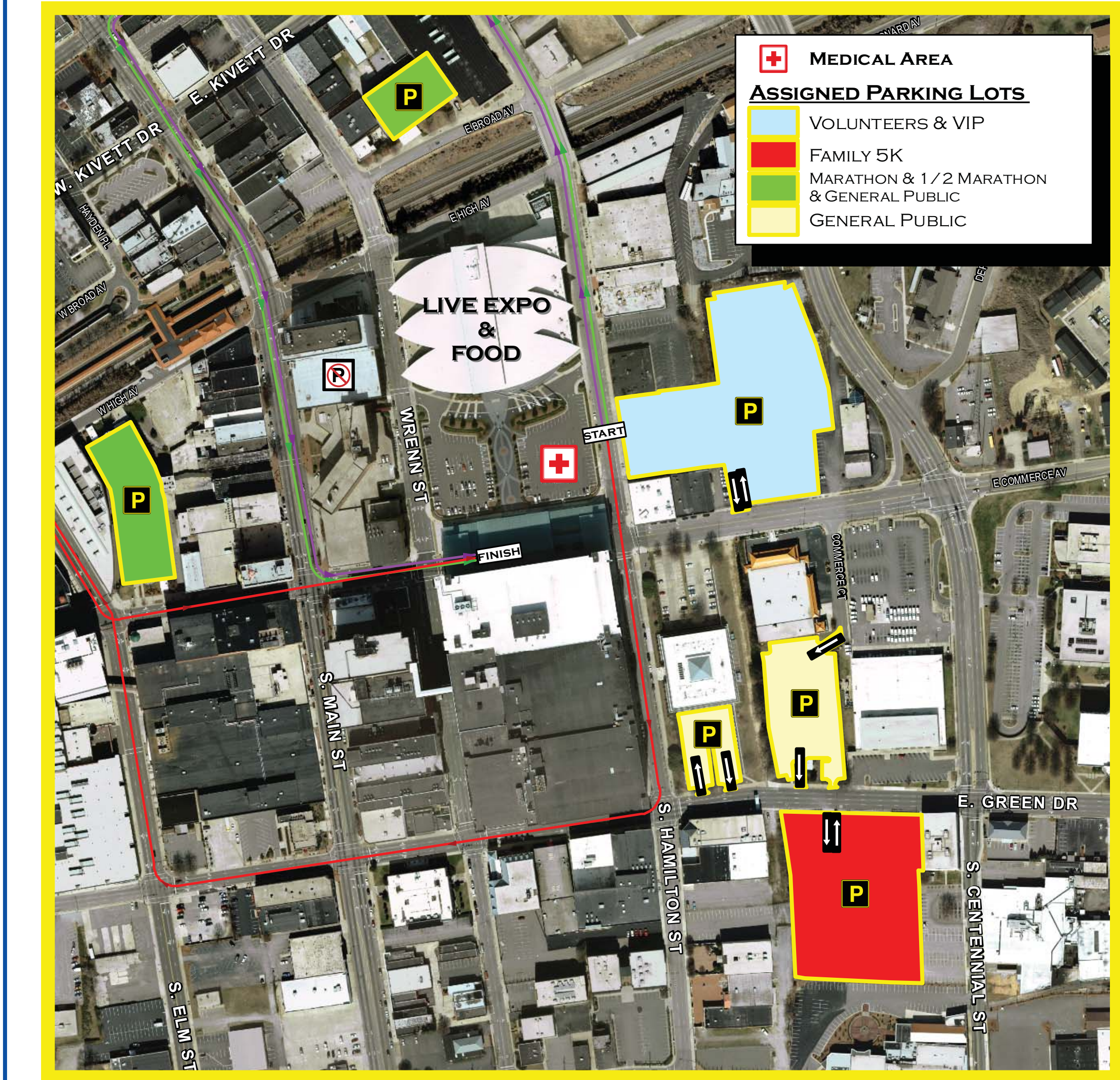
2010 UNITED HEALTHCARE NORTH CAROLINA MARATHON

SATURDAY, MARCH 20, 2010

MARATHON & 1/2 MARATHON START TIME 8:00 A.M.
FAMILY 5K START TIME 9:00 A.M.



DOWNTOWN PARKING MAP



RACE REGISTRATION PACKET PICKUP
 FRIDAY, MARCH 19, 2010 - NOON TO 10:00 P.M.
 SATURDAY, MARCH 20, 2010 - 6:30 A.M. TO 7:40 A.M.

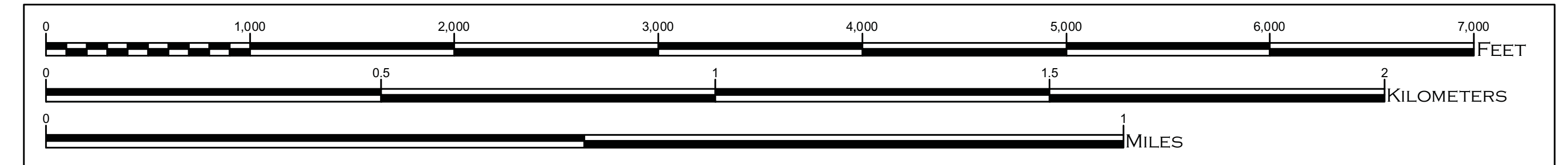
SHOWPLACE
 211 E. COMMERCE AVE
 HIGH POINT, NC 27260

RACE SUPPORT STATIONS

- WATER/GATORADE STATION
- MEDICAL STATION
- FIRE STATION

FM TALK 101.1 LIVE HEALTH EXPO
 FRIDAY, MARCH 19 - SATURDAY, MARCH 20

FM TALK 101.1
 SHOWPLACE
 211 E. COMMERCE AVE
 HIGH POINT, NC 27260



HIGH POINT
 NORTH CAROLINA'S INTERNATIONAL CITY

MAP PROVIDED BY
 CITY OF HIGH POINT
 DEPARTMENT OF TRANSPORTATION
 211 SOUTH HAMILTON STREET
 HIGH POINT, NORTH CAROLINA 27260
 MARCH 2010

DISCLAIMER: This map is provided as a public information resource and every reasonable effort has been made to assure the quality of the map. This data, information, and related graphics are not legal documents and are not intended to be used as such. The City of High Point makes no warranty, expressed or implied, as to the accuracy, reliability, utility, or completeness of this information. The City of High Point assumes no liability either for any errors, omissions, or inaccuracies in the information provided regardless of the cause of such or for any decision made, action taken, or action not taken by the user in reliance upon any maps or information provided herein.